

Sam Rye



UY Regional Innovation Hub

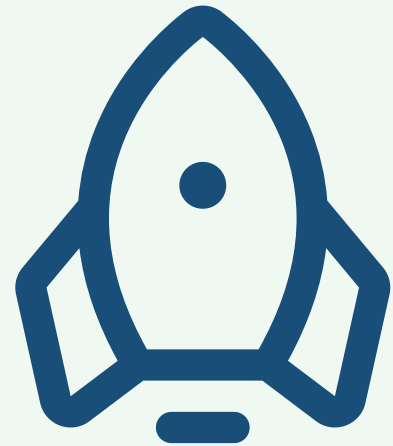
Powering the Upper Yarra to adapt and thrive in a changing world

Regional innovation doesn't just happen.

In a rapidly changing world, the importance of co-ordination, collaboration and adaptation drastically increases.



Current State



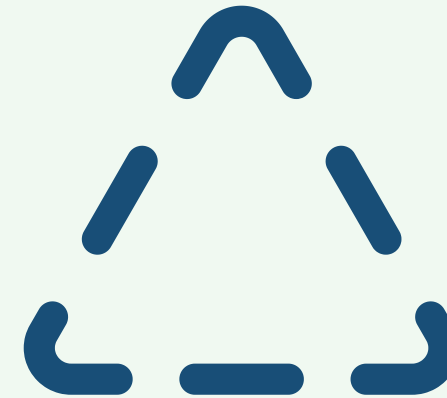
A Sense of Momentum

Innovation activity has been sparked through the Local Development Project and the IWGs



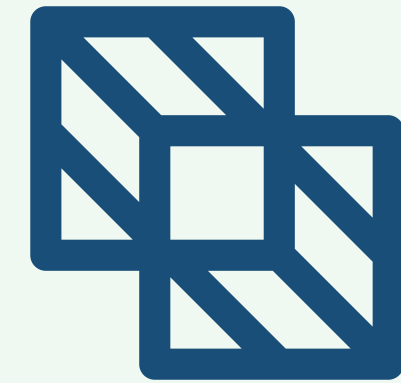
Limited Timeline

Forestry Transition funding backing the Local Development Project due to end in 2027



Fragmented Innovation

Isolated local people and initiatives struggling without support and resources, leading to burn out

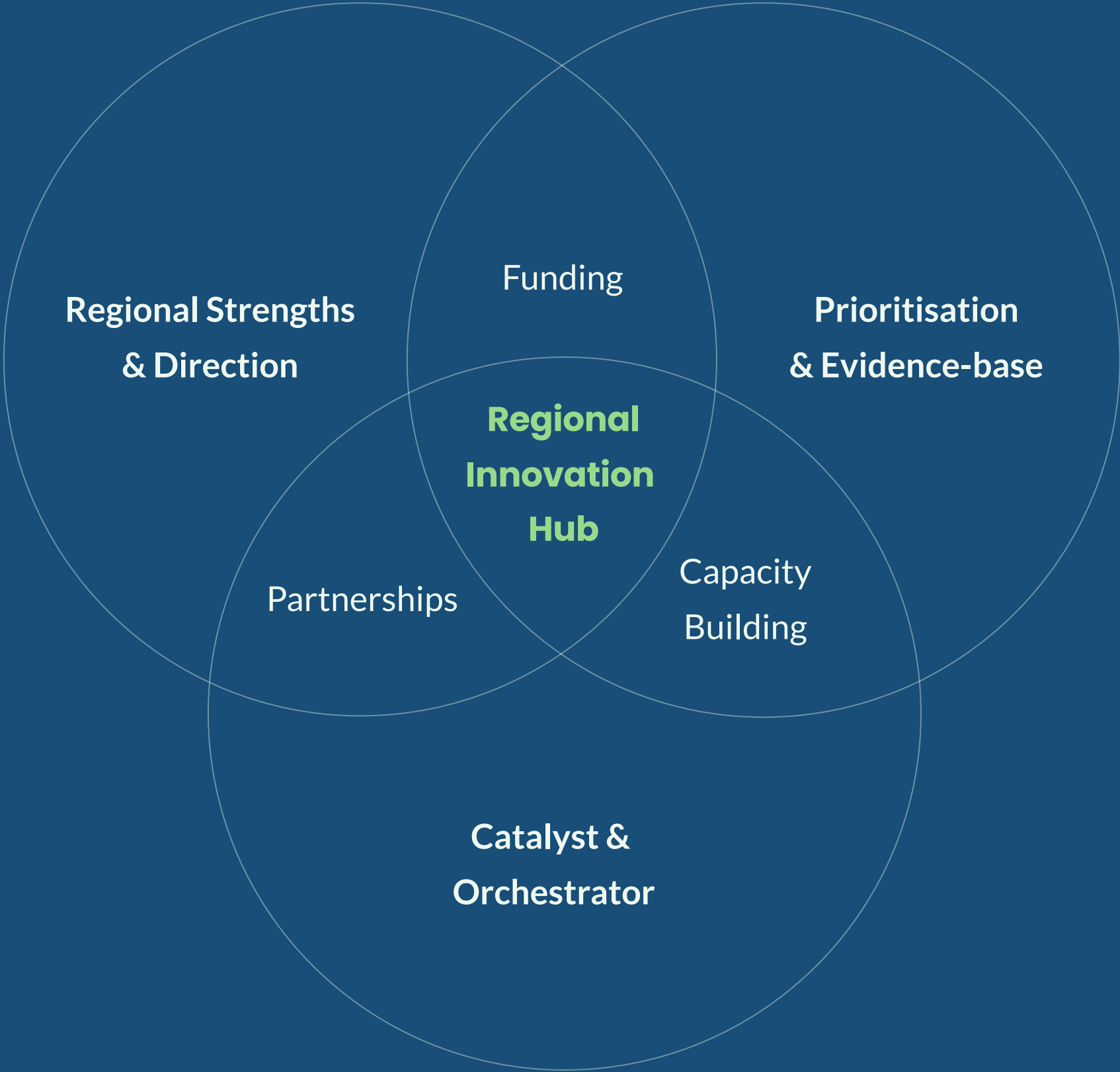


Lack of Coherence

No clear vision, collective direction or interface for strengths-based development of the region

Upper Yarra

Regional Innovation Hub



Create an enduring legacy that builds on the best of the Local Development Project, to **create a place our young people want to stay and build a future in.**

Regional Innovation Hub

Proposed functions

Regional Interface

Developing partnership opportunities and connecting the UY region with government, business, sectoral supports and academia

Funding Broker

Attracting, holding and distributing resources for social and economic innovation initiatives, with a Place-based Capital lens

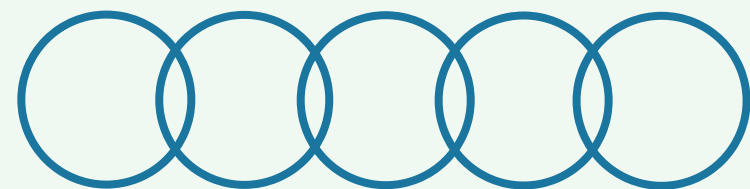
Innovation Ecosystem Orchestrator

Aligning and connecting initiatives for maximum impact, fostering inclusive innovation and ensuring funding is leveraged

Capability & Presence

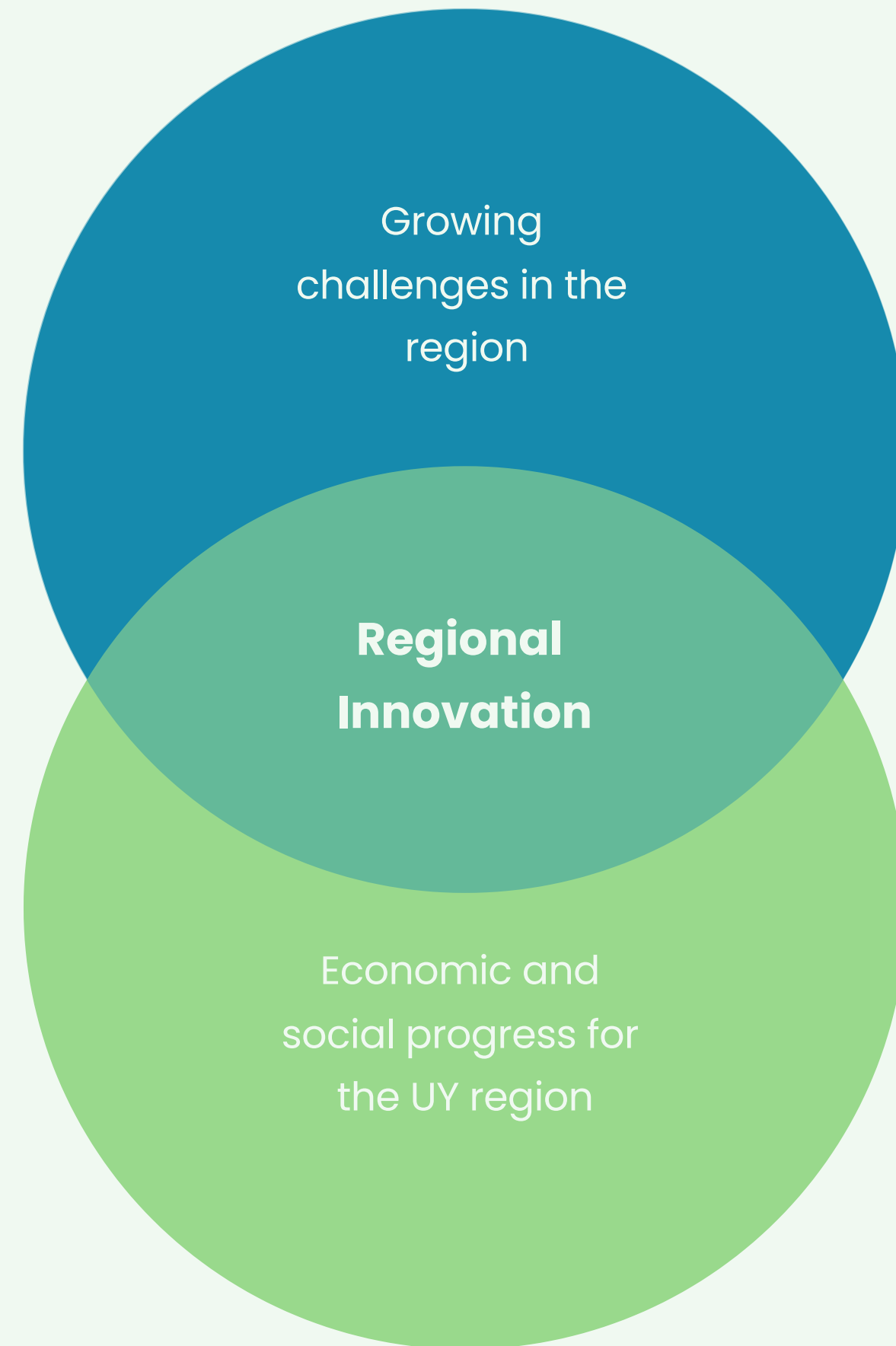
Empowering the UY with access to training and skill building, and ensuring strong presence in State and National discussions

Urgent Opportunities



Place-based multi-challenge collaboration focus

Engage industry, academia and government
for impact-oriented innovation



Example Offerings



Regional Innovation Strategy

Development of a strategy in partnership with community, council, state government and regional innovation specialists



Incubator Program

Support for initiatives sparked by the Local Development Project to ensure they have the structured support and resourcing to come to fruition



Innovation Cafes

Local event series to spark new connections, map the innovation landscape, build skills, and share stories about innovation in UY

Australian Parallels

Bega Valley Innovation Hub

Primarily focused on economic development, BVIH is a University-Industry-Council partnered innovation hub running a regional entrepreneurship accelerator program, co-working space, capacity building and events program.

BVIH focuses on multiple challenge areas: Aquaculture, Advanced Manufacturing, Circularity, Ecotourism & High Quality Food Production



**"We are surrounded by places.
We walk over and through them. We live in places,
relate to others in them, die in them. Nothing we do is
unplaced. How could it be otherwise?
How could we fail to recognize this primal fact?"**

– Edward S. Casey, *The Fate of Place*



Building from within

Sam Rye

Senior Research Officer, Monash Sustainable Development Institute

Millgrove Resident, Home Owner, Father

SES Member, Wesburn Primary School Council President, Member of
Millgrove Resident Action Group

More detail

Concept Note

A document outlining in a little more detail how a Regional Innovation Hub might function, with appendix of models reviewed and adapted for the Upper Yarra context

[Read the document](#)



Want to make a presentation like this one?

Start with a fully customizable template, create a beautiful deck in minutes, then easily share it with anyone.

Create a presentation (It's free)